

## FOOTNOTES

- <sup>1</sup> Universities in Germany (incl. Medicine). Sources: Destatis 2019, Personal an Hochschulen, 2018, Fachserie 11, Reihe 4.4., S. 34-37. / Destatis 2019, Studierende an Hochschulen 2018, Fachserie 11, Reihe 4.1., S.69 / Destatis 2019, Prüfungen an Hochschulen, 2018, Fachserie 11, Reihe 4.2. S.58, S.28. / Destatis 2020, Statistik der Promovierenden Berichtsjahr 2019, S. 7, S. 12 / Gehlke et al. (2018), CHE Teilzeitstudium-Check 2018/19, CHE Arbeitspapier Nr. 213, S. 37f./ Nickel et al. (2020), Update 2020: Studieren ohne Abitur in Deutschland, CHE Arbeitspapier Nr. 228, S. 29.
  - <sup>2</sup> Staff at University of Jena (excl. university hospital), including those on leave of absence, Reference date: 31.12.2018.
  - <sup>3</sup> Based on voluntary information.
  - <sup>4</sup> In undergraduate/basic programs (including masters degree).
  - <sup>5</sup> Winter semester 2018/19.
  - <sup>6</sup> Proportion related to students in undergraduate programs (including Master's degree).
  - <sup>7</sup> Data on German higher education institutions (all types) in winter semester 2016/17, including the FernUniversität Hagen. source: Gehlke et al. (2018), p 38.
  - <sup>8</sup> Students without a general higher education entrance qualification, with completed vocational training or a comparable subject-related qualification.
  - <sup>9</sup> Special CHE report based on data from the Federal Statistical Office. Data for German higher education institutions (all types) in reporting year 2018. Source: Nickel et al. (2020), p 29.
  - <sup>10</sup> The Maternity Protection Act (Mutterschutzgesetz - MuSchG) also applies to female students since 2018.
  - <sup>11</sup> Proportion of students participating in the 21st Social Survey of Deutsches Studentenwerk (in 2016) at Jena university (N=313) and at universities in Germany (N=34138), who provided information on health and indicated a health impairment that impedes their studies. Source: Middendorff et al. (2017).
  - <sup>12</sup> Proportion of students participating in the 21st Social Survey of Deutsches Studentenwerk (in 2016) at Jena university (N=324) and at universities in Germany (N=35745), who provided information on the educational background of their parents. A person comes from an academic home, if one or both parent(s) have an academic degree. Source: Middendorff et al. (2017).
  - <sup>13</sup> Examination year 2018 (winter semester 2017/2018 and summer semester 2018).
  - <sup>14</sup> Number of doctoral candidates registered in Doc-In. Reference date 1.12.2018. Doctoral candidates in Germany with reference date 1.12.2019.
  - <sup>15</sup> Kalender years 2016 to 2018.
  - <sup>16</sup> Source: Destatis 2020, Bildung und Kultur, Statistik der Habilitationen, <https://www-genesis.destatis.de/genesis/online?sequenz=tabelleErgebnis&selectionname=21351-0001#abreadcrumb>.
- n.a.: Information is not available.

## CONTACT

Friedrich Schiller University Jena

Office of the Vice-President for Young  
Researchers and Diversity Management  
Fürstengraben 1  
07743 Jena

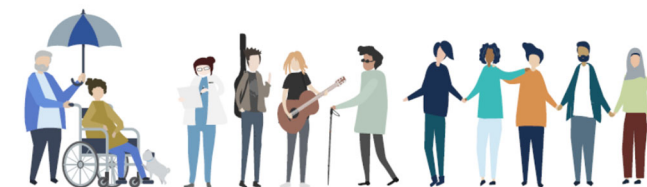
E-Mail: [vpgleichstellung@uni-jena.de](mailto:vpgleichstellung@uni-jena.de)

Fotos: freepik from [www.flaticon.com](http://www.flaticon.com) | Layout: Stabsstelle Kommunikation

[www.uni-jena.de/vpwnp](http://www.uni-jena.de/vpwnp)  
[www.uni-jena.de/fairmiteinander](http://www.uni-jena.de/fairmiteinander)

FRIEDRICH-SCHILLER-  
UNIVERSITÄT  
JENA

Büro des Vizepräsidenten für wissenschaftlichen Nachwuchs und Gleichstellung



## DIVERSITY AT A GLANCE

*Factsheet*

2018

## STAFF

Number of Persons	Uni Jena (excl. Medicine)	Germany <sup>1)</sup>
<b>academic staff<sup>2)</sup></b>	2 072	209 994
female	38,8%	41,0%
male	61,2%	59,0%
of international origin [proportion of academic staff]	359 [17,9%]	n.a.
female	44,0%	-
male	56,0%	-
by age group [proportion of women]	2 072 [38,8%]	n.a.
< 40 years	68,3% [41,9%]	-
40-59 year	27,3% [35,4%]	-
60 years & older	4,4% [11,0%]	-
With family obligations		
of which in maternity leave	56	n.a.
of which in parental leave	139	n.a.
female	57,6%	-
male	42,4%	-
Professors	293	24 683
female	23,9%	24,7%
male	76,1%	75,3%
of international origin	8,5%	n.a.
Mid level positions, without doctorate	1 072	n.a.
female	42,4%	-
male	57,6%	-
of international origin	18,7%	-
Mid level positions, with doctorate	707	n.a.
female	39,5%	-
male	60,5%	-
of international origin	19,0%	-
<b>Non-academic staff<sup>2)</sup></b>	1 368	271 527
female	62,8%	72,1%
male	37,2%	27,9%
of international origin	1,1%	n.a.
by age group [proportion of women]	1 368 [62,8%]	n.a.
< 40 years	38,1% [61,6%]	-
40-59 years	49,2% [66,0%]	-
60 years & older	12,7% [66,7%]	-
of which with severe disability [proportion of women] <sup>3)</sup>	6,4% [59,8%]	n.a.

Number of Persons	Uni Jena (excl. Medicine)	Germany <sup>1)</sup>
Non-academic staff		
in maternity leave	29	n.a.
in parental leave <sup>2)</sup>	71	n.a.
female	64,8%	-
male	35,2%	-

## STUDENTS

Number of persons	Uni Jena total	Germany <sup>1)</sup>
<b>Students<sup>4)5)</sup></b>	15 620	1 753 670
female	55,7%	51,0%
male	44,3%	49,0%
Of international origin [proportion of students] <sup>5)</sup>	1 783 [11,4%]	257 913 [14,7%]
female	60,6%	49,2%
male	39,4%	50,8%
<b>Students in 1st subject-related semester<sup>4)5)</sup></b>	4 266	429 462
female	54,6%	52,8%
male	45,4%	47,2%
of international origin [proportion of women]	12,0% [57,4%]	17,2% [50,2%]
part-time students [proportion of students] <sup>6)7)</sup>	287 [1,8%]	201 541 [7,2%]
female	57,1%	k.A.
male	42,9%	k.A.
professionally qualified students [proportion of students] <sup>6)8)9)</sup>	256 [1,6%]	62 107 [2,1%]
female	39,5%	46,5%
male	60,5%	53,5%
maternity/parental leave [proportion of students] <sup>6)10)</sup>	144 [0,9%]	n.a.
female	95,1%	-
male	4,9%	-
With health impairments (proportion of students surveyed) <sup>3)11)</sup>	12,7%	11,9%
female	12,2%	13,0%
male	11,5%	10,2%
With nonacademic family background (proportion of students surveyed) <sup>3)12)</sup>	37,2%	39,6%
female	36,2%	41,2%
male	39,2%	38,1%

Number of Persons	Uni Jena total	Germany <sup>1)</sup>
<b>Graduates (total)<sup>4)13)</sup></b>	2 885	269 176
female	59,1%	53,7%
male	40,9%	46,3%
of international origin	12,2%	n.a.
Bachelor Graduates <sup>4)13)</sup>	1 100	106 055
female	61,1%	52,5%
male	38,9%	47,5%
of international origin	4,7%	n.a.
Master Graduates <sup>4)13)</sup>	1 086	93 853
female	55,6%	45,7%
male	44,4%	54,3%
of international origin	25,5%	n.a.

## YOUNG RESEARCHERS

Number of Persons	Uni Jena total	Germany <sup>1)</sup>
<b>doctoral candidates<sup>14)</sup></b>	3 459	180 591
female	49,3%	46,4%
male	50,7%	53,6%
of international origin [proportion of doctoral candidates]	789 [22,8%]	41 773 [23,1%]
female	45,9%	46,7%
male	54,1%	53,3%
average age (Median) in years	30,0	29,9
with parenthood [proportion of doctoral candidates] <sup>3)14)</sup>	553 [16,0%]	n.a.
female	49,4%	-
male	50,6%	-
of international origin	16,6%	-
<b>doctoral degrees<sup>13)</sup></b>	543	27 627
female	51,2%	45,2%
male	48,8%	54,8%
of international origin	18,0%	18,8%
<b>habilitation<sup>15)16)</sup></b>	86	4 696
female	36,0%	30,4%
male	64,0%	69,6%
of international origin	10,5%	11,2%